

Appendix A.53:

Gainsborough Reserve – VsVp 38176

Table 1: Site Description for Gainsborough Reserve (VsVp 38176).

Attribute	Yes/No			Description/Date	Symbol in Figure 1
	10-m Buffer	20-m Buffer	50-m Buffer		
Near a body of surface water or other free face features?	No	No	No	The center of the site is ~700 m to the SW from the Heathcote River (the free-face height is ~1 m).	NA
Lateral spreading observed during the CES?	No	No	No	No lateral spreading was observed by the mapping team. ¹	NA
Nearby buildings or structures?	No	No	Yes	Building coverage of the 50-m buffer is 8%.	NA
Sloping land?	No	No	No	Flat land, open field + residential area	NA
Step changes in the ground surface?	No	No	No	NA	NA
Retaining walls?	No	No	No	NA	NA
Vegetation?	No	Yes	Yes	Trees and bushes cover 8% of the 20-m buffer and 12% of the 50-m buffer. They are in all quadrants of the 20-m and 50-m buffers.	NA
Anthropogenic changes to the site between the LiDAR surveys?	ND	ND	ND	Not evaluated because LiDAR surveys were not used to estimate the ejecta-induced settlement at the site. Ejecta were evidently absent from the site.	NA
Other important factors?	No	No	Yes	Low-motor-vehicle-volume road (Gainsborough Street) covers 12% and 10% of the 20-m and 50-m buffers, respectively; it occupies the SW and SE quadrants of the 20-m buffer and the SW, SE, and NE quadrants of the 50-m buffer.	NA

Note: Buffer is the area within a circle of a specified radius with VsVp investigations done at its center (172.601913°, -43.563623°).

¹ Canterbury Geotechnical Database. (2012). "Observed Ground Crack Locations", Map Layer CGD0400 - 23 July 2012, retrieved July 09, 2018 from <https://canterburygeotechnicaldatabase.projectorbit.com/>

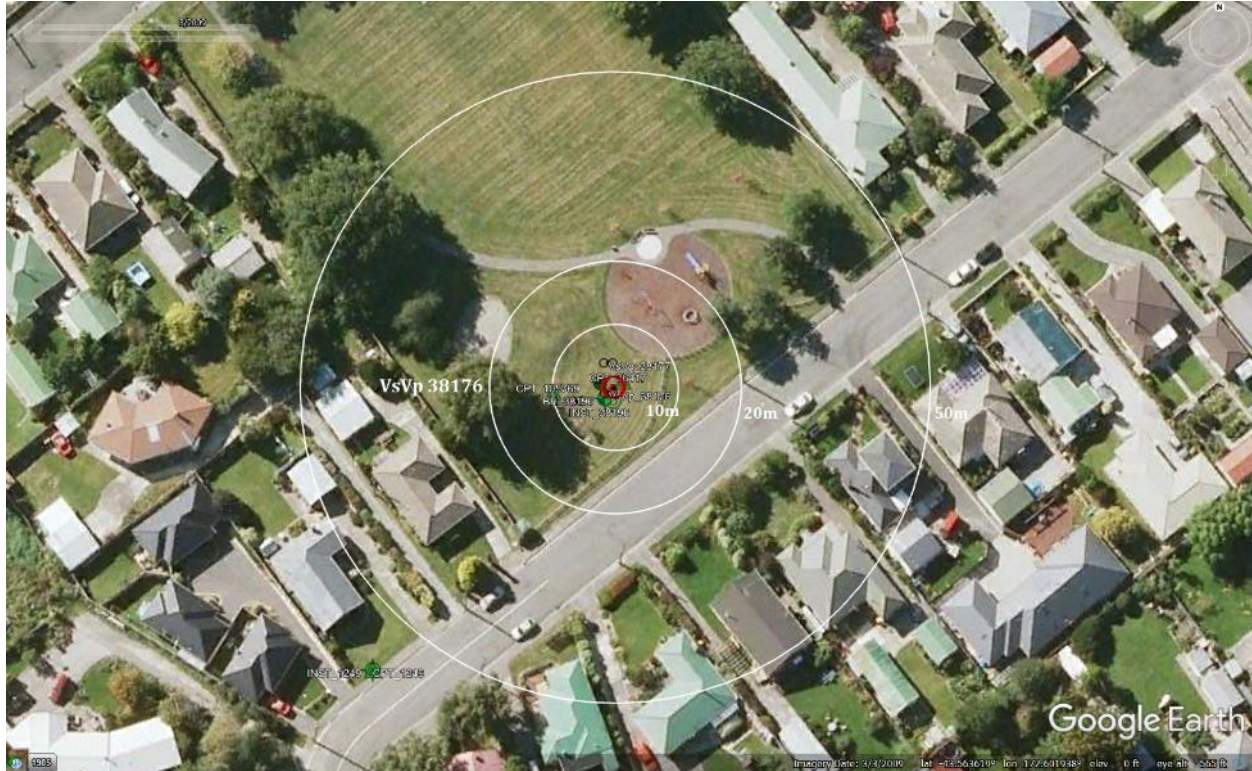


Figure 1: Site plan.

Note 1: The LiDAR surveys were not considered for the ejecta-induced settlement assessment because the site had no ejecta.

Table 2: LiDAR flight error adjustments, global adjustments for the difference between average LiDAR point elevations and benchmark survey elevations, and vertical tectonic movement adjustments.

Earthquake Event(s)	LiDAR Flight Error	Adjustments (mm)	
		Global Offset ²	Tectonic Vertical Movement
Sep-10	NA	-3	0
Feb-11	NA	16	-50
Jun-11	0	38	-20
Dec-11	NA	-65	0
CES	NA	-14	-70
Any LiDAR survey affected by ejecta?			No

Note: The negative sign indicates the subtraction from the ground surface subsidence, while the positive sign indicates the addition to the ground surface subsidence.

² Russell, J., & van Ballegooy, S. (2015). *Canterbury Earthquake Sequence: Increased liquefaction vulnerability assessment methodology*. New Zealand: Tonkin & Taylor Ltd.

Table 3: Ejecta-Induced settlement for the top 20 m of the soil profile for the 50th %ile PGA, $P_L=50\%$, and $C_{FC}=0.13$ using BI-2014, ZRB-2002, and I_c cutoff of 2.6.

Earthquake Event(s)	M_w	PGA (g)	Depth to Groundwater (m)	S_{V1D} (mm)		
				10-m buffer	20-m buffer	50-m buffer
Sep-10	7.1	0.25	0.5	213±20	213±20	221±20
Feb-11	6.2	0.43	1.5	222±50	222±50	229±50
Jun-11	6.2	0.18	1.2	84±25	84±25	88±25
Dec-11	6.1	0.14	0.8	29±50	29±50	31±50

Notes: S_{V1D} = Average vertical settlement due to volumetric compression using Boulanger and Idriss (2014) (BI-2014), Zhang et al. (2002) (ZRB-2002) procedures and de Greef and Lengkeek (2018) thin-layer correction.

Note 2: The uncertainty for volumetric settlement was derived based on the sensitivity of volumetric settlement to PGA, C_{FC} , and P_L for each earthquake event for VsVp 57203 *Shirley Intermediate School* and CC LIQ 1 – CPT 5586 – *Vivian St* sites. Taking the 50th percentile as the baseline case, the minimum and maximum values corresponding to the difference between the 25th percentile and the 50th percentile and the 75th percentile and the 50th percentile were determined. The arithmetic mean of the range of the minimum and maximum difference was evaluated for each patch at the two sites. The maximum arithmetic mean for each earthquake event was rounded to the nearest five and used as the uncertainty value. Accordingly, the 1-D volumetric settlement uncertainties of ±20, ±50, ±25, and ±50 mm for the Sep-10, Feb-11, Jun-11, and Dec-11 earthquake events, respectively, were used for all sites in this study.

Table 4: Best final estimates of ejecta-induced settlement for the site.

EQ Event	10-m buffer			20-m buffer			50-m buffer		
	$S_{E,L}$ (mm)	$S_{E,P}$ (mm)	$S_{E,final}$ (mm)	$S_{E,L}$ (mm)	$S_{E,P}$ (mm)	$S_{E,final}$ (mm)	$S_{E,L}$ (mm)	$S_{E,P}$ (mm)	$S_{E,final}$ (mm)
Sep-10	ND	0	0	ND	0	0	ND	0	0
Feb-11	ND	0	0	ND	0	0	ND	0	0
Jun-11	ND	0	0	ND	0	0	ND	0	0
Dec-11	ND	0	0	ND	0	0	ND	0	0

Notes: $S_{E,L}$ = Ejecta-induced settlement based on LiDAR data was not determined (ND) due to the evident absence of ejecta at the site; $S_{E,P}$ = Ejecta-induced settlement based on ground and aerial photographs and LDAT property inspection reports; $S_{E,final}$ = Best final estimate of ejecta-induced settlement.

Note 3:

- $S_{E,final}$ for all buffers is based solely on $S_{E,P}$ for all earthquake events due to the evident absence of ejecta.

- The Gainsborough Reserve site is in the zone of severe to excessive LPI overprediction of liquefaction severity for the Sep-10 and Feb-11 EQs (Maurer et al. 2014³). No liquefaction ejecta-induced damage was reported for the properties within the 50-m buffer.

Summary:

The best estimate of the ejecta-induced free-field ground settlement at the Gainsborough Reserve site for the SEP 2010, FEB 2011, JUN 2011, and DEC 2011 earthquake is 0 mm, 0 mm, 0 mm, and 0 mm, respectively.



Figure 2: Location of the site.

³ Maurer, B. W., Green, R. A., Cubrinovski, M., & Bradley, B. A. (2014). Evaluation of the Liquefaction Potential Index for Assessing Liquefaction Hazard in Christchurch, New Zealand. *Journal of Geotechnical and Geoenvironmental Engineering*, 140(7), 04014032-1-11. doi:10.1061/(asce)gt.1943-5606.0001117

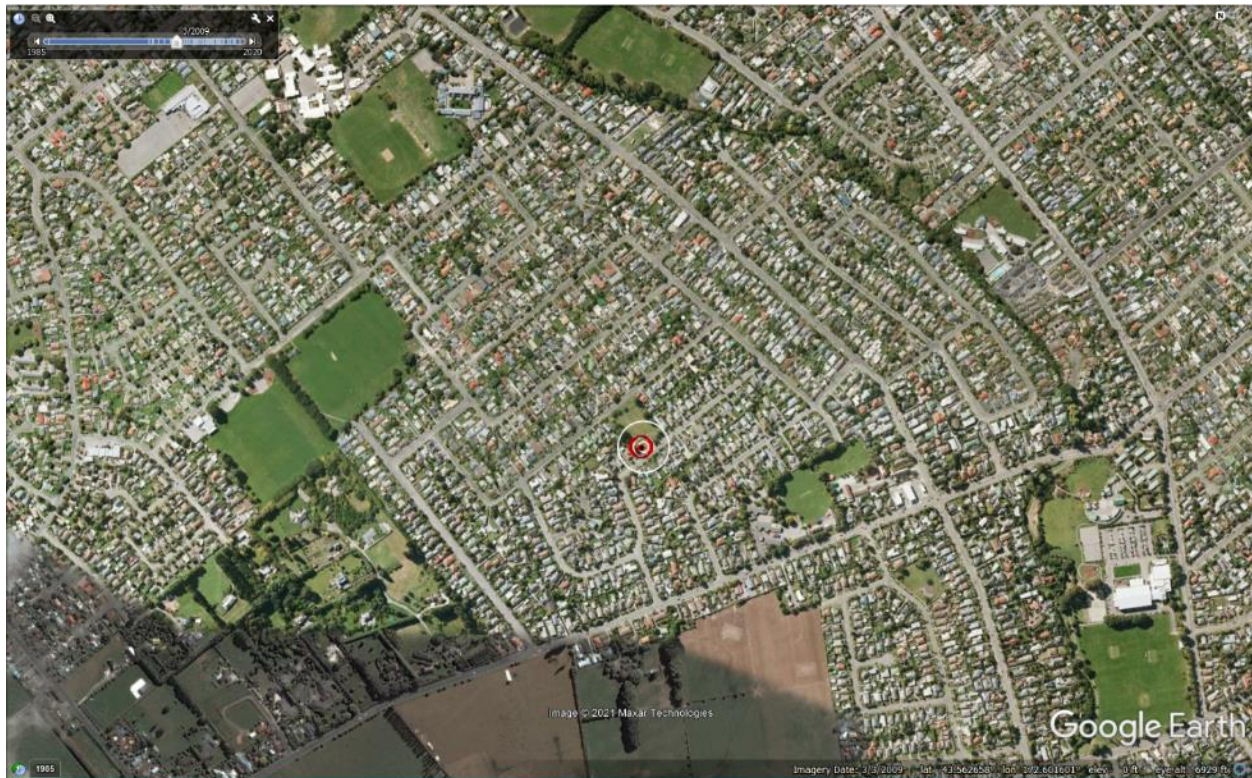


Figure 3: Position of the site relative to nearby buildings, vegetation, and free-face features.



Figure 4: Street view of the flat land.



Figure 5: Satellite image of the site taken in Jan 2005.



Figure 6: Satellite image of the site taken in Mar 2009.

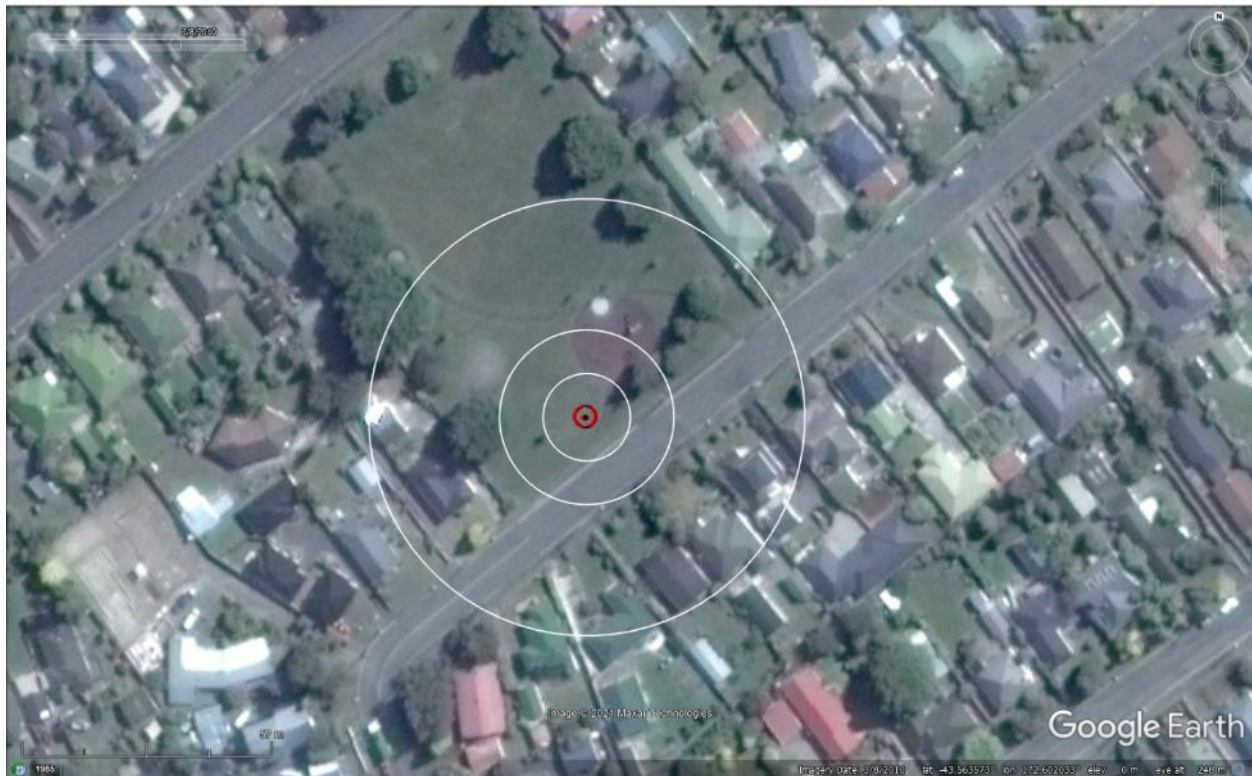


Figure 7: Satellite image of the site taken in Aug 2010.



Figure 8: Satellite image of the site taken on Sep 3, 2010.



Figure 9: Satellite image of the site taken on Sep 5, 2010.



Figure 10: Satellite image of the site taken on Feb 15, 2011.



Figure 11: Satellite image of the site taken on Feb 26, 2011.



Figure 12: Satellite image of the site taken on Mar 28, 2011.



Figure 13: Satellite image of the site taken in Apr 2012.



Figure 14: Satellite image of the site taken in Nov 2015.

Liquefaction Ejecta Case Histories for 2010-11 Canterbury Earthquakes



Figure 15: Aerial photograph of the site taken on Sep 4, 2010.



Figure 16: Aerial photograph of the site taken on Feb 24, 2011.

Liquefaction Ejecta Case Histories for 2010-11 Canterbury Earthquakes

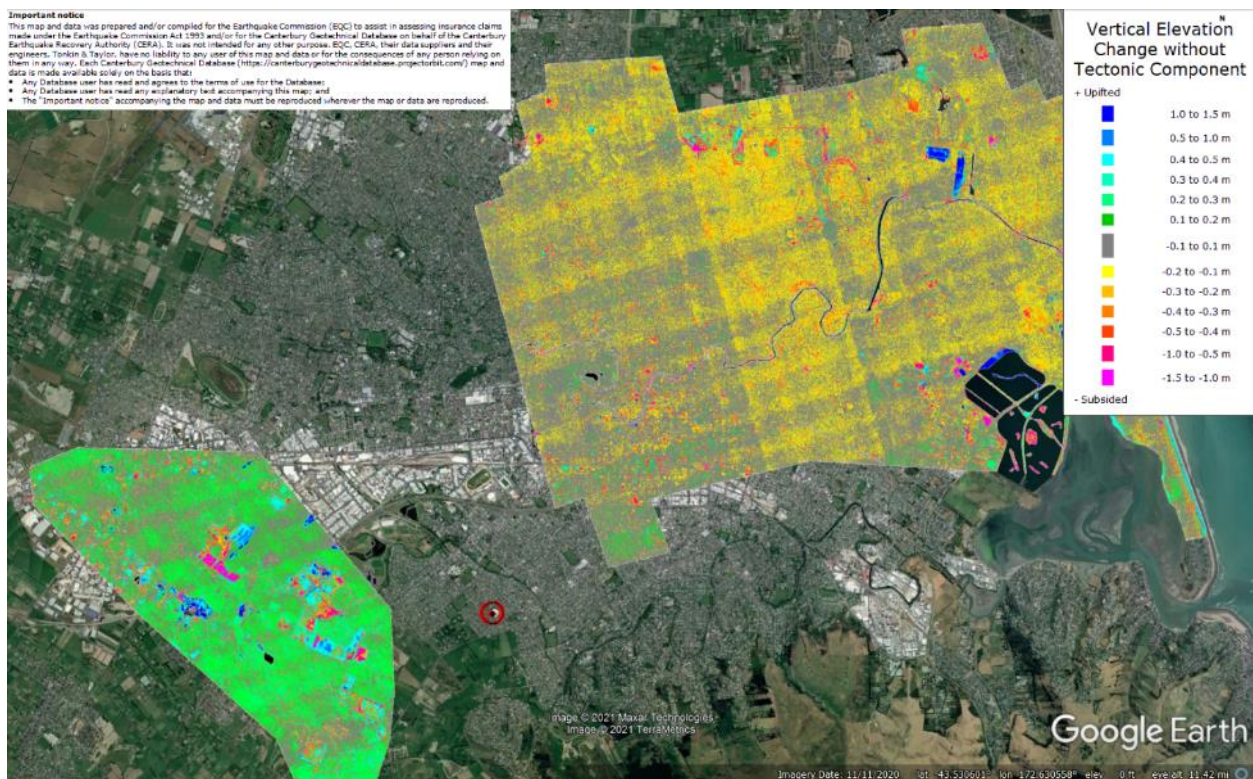


Figure 17: Aerial photograph from June 14-15, 2011, is not available.



Figure 18: Aerial photograph from June 16, 2011, is not available.

Liquefaction Ejecta Case Histories for 2010-11 Canterbury Earthquakes



Liquefaction Ejecta Case Histories for 2010-11 Canterbury Earthquakes

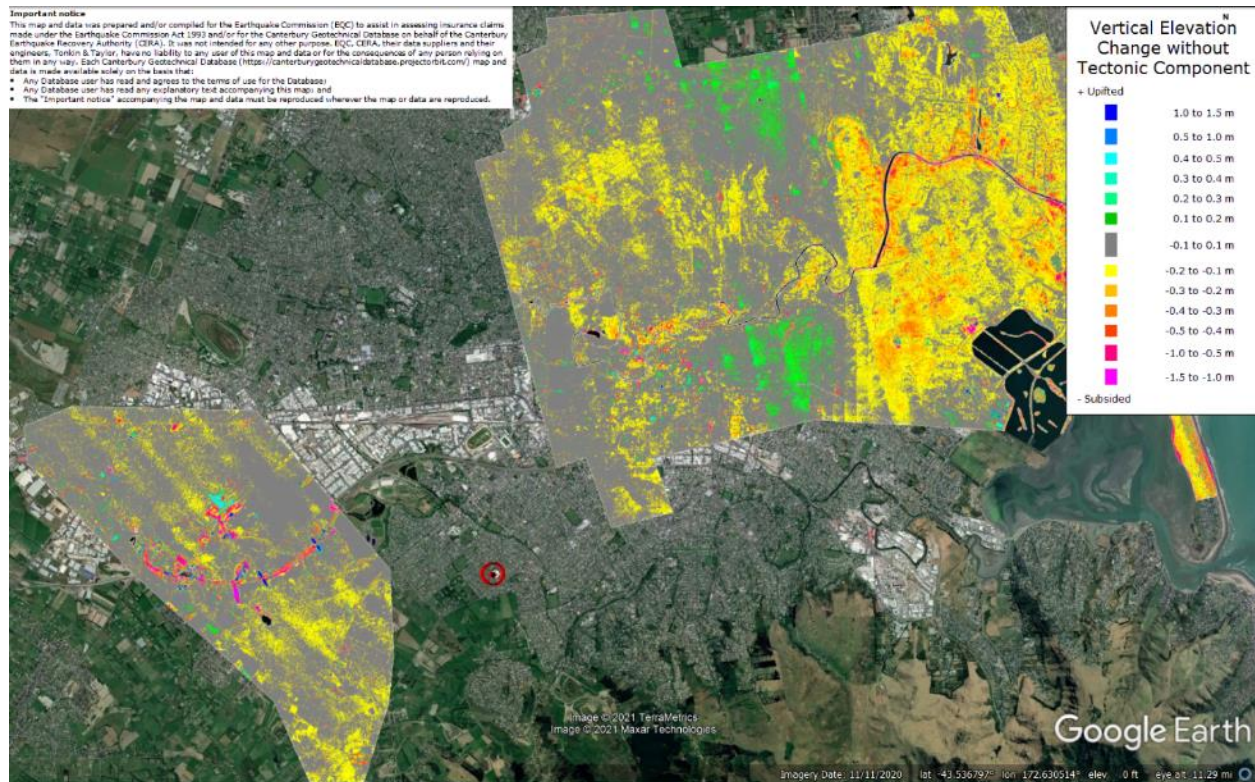


Figure 21: Vertical Ground Movements (Surface – Tectonic) for Feb 2011 Earthquake are not available.

Liquefaction Ejecta Case Histories for 2010-11 Canterbury Earthquakes

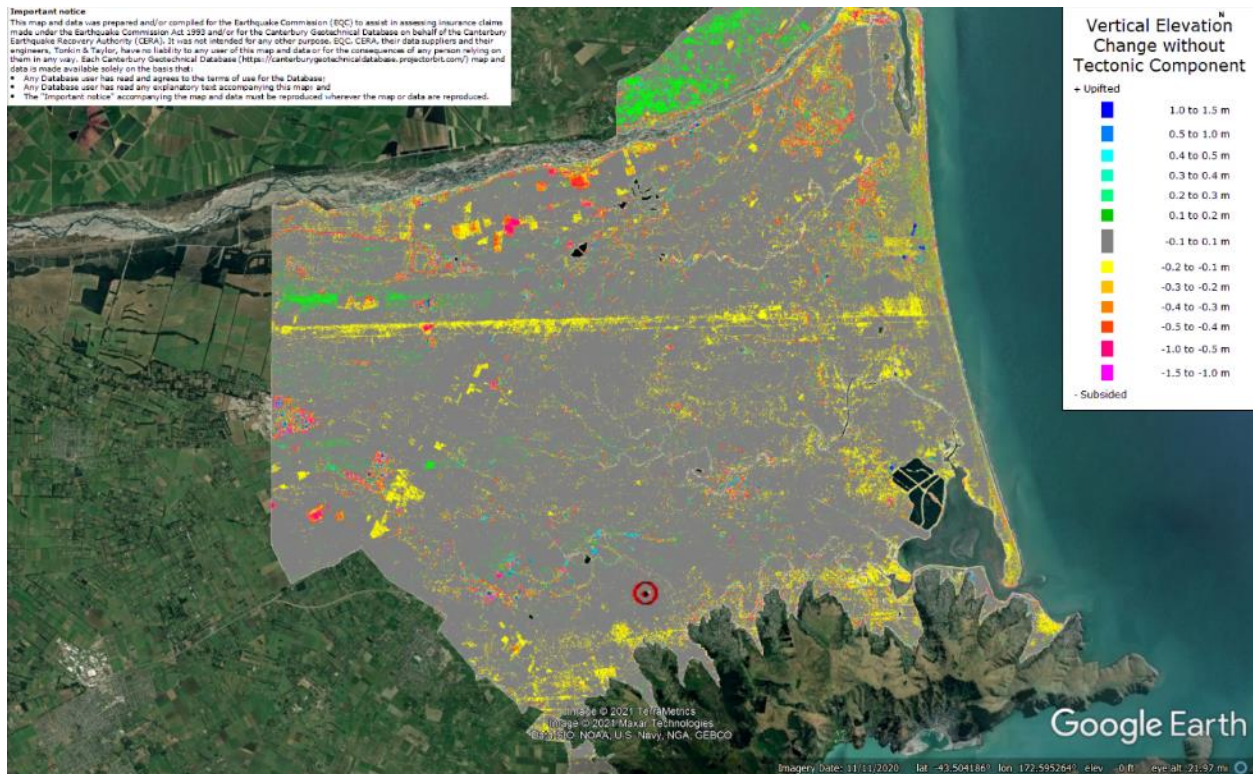


Figure 22: Vertical Ground Movements (Surface – Tectonic) for June 2011 Earthquake – the site is not in the apparent zone of overestimated ground surface subsidence.

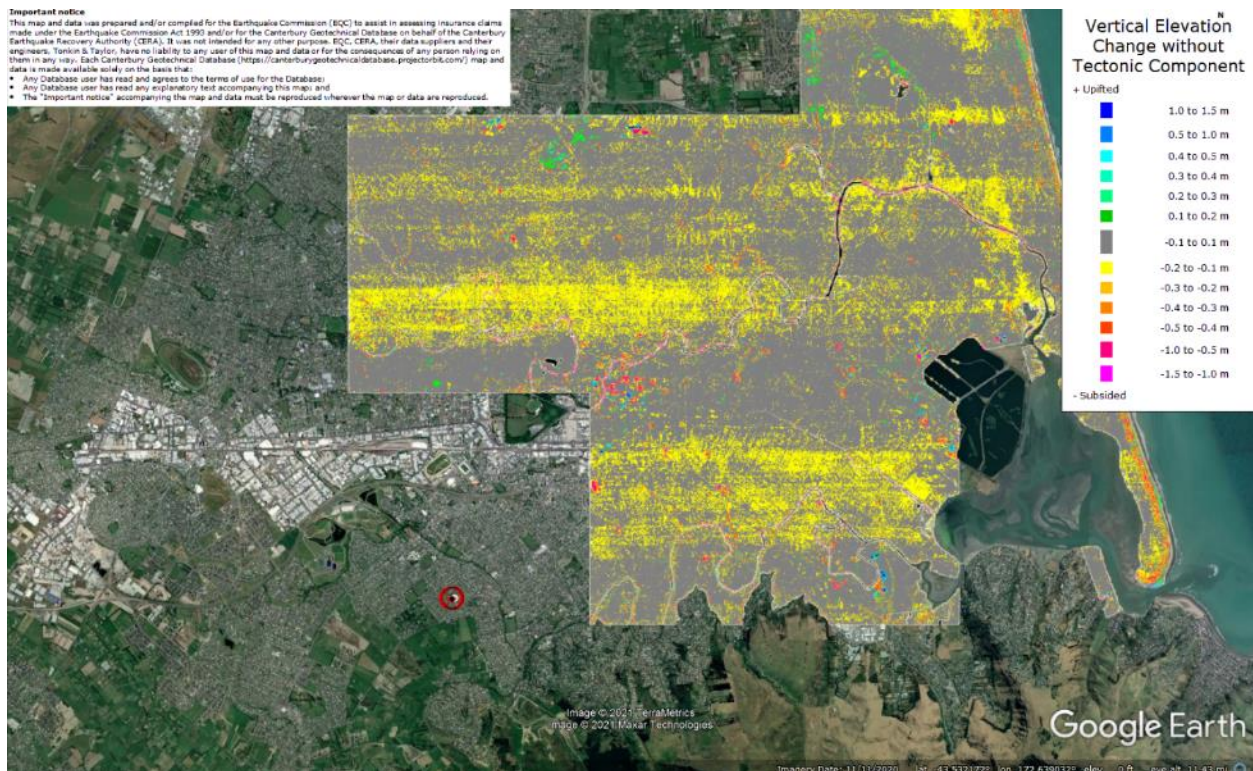


Figure 23: Vertical Ground Movements (Surface – Tectonic) for Dec 2011 Earthquake are not available.

Liquefaction Ejecta Case Histories for 2010-11 Canterbury Earthquakes

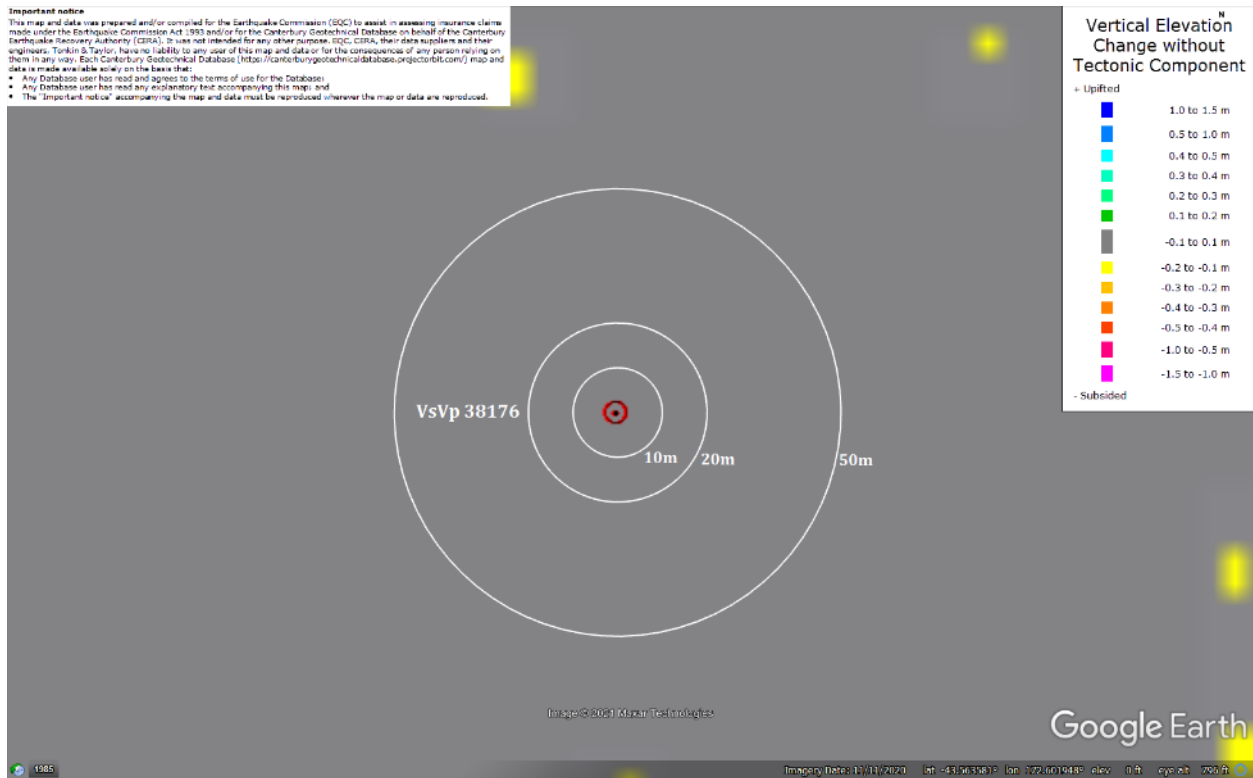


Figure 24: Ground surface subsidence without tectonic component for June 2011 Earthquake according to the LiDAR DEM.



Figure 25: No lateral spreading for Canterbury Earthquake Sequence.

Liquefaction Ejecta Case Histories for 2010-11 Canterbury Earthquakes

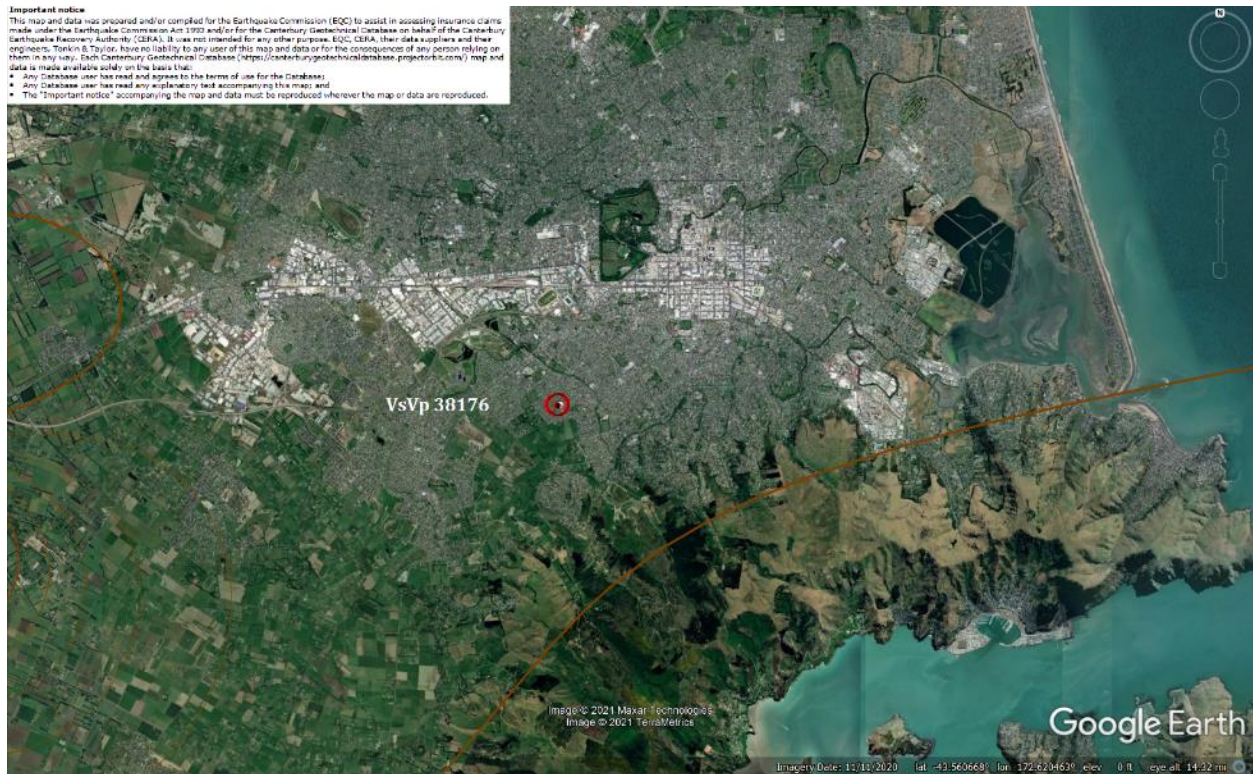


Figure 26: Vertical tectonic movements for Sep 2010 Earthquake.



Figure 27: Vertical tectonic movements for Feb 2011 Earthquake.

Liquefaction Ejecta Case Histories for 2010-11 Canterbury Earthquakes

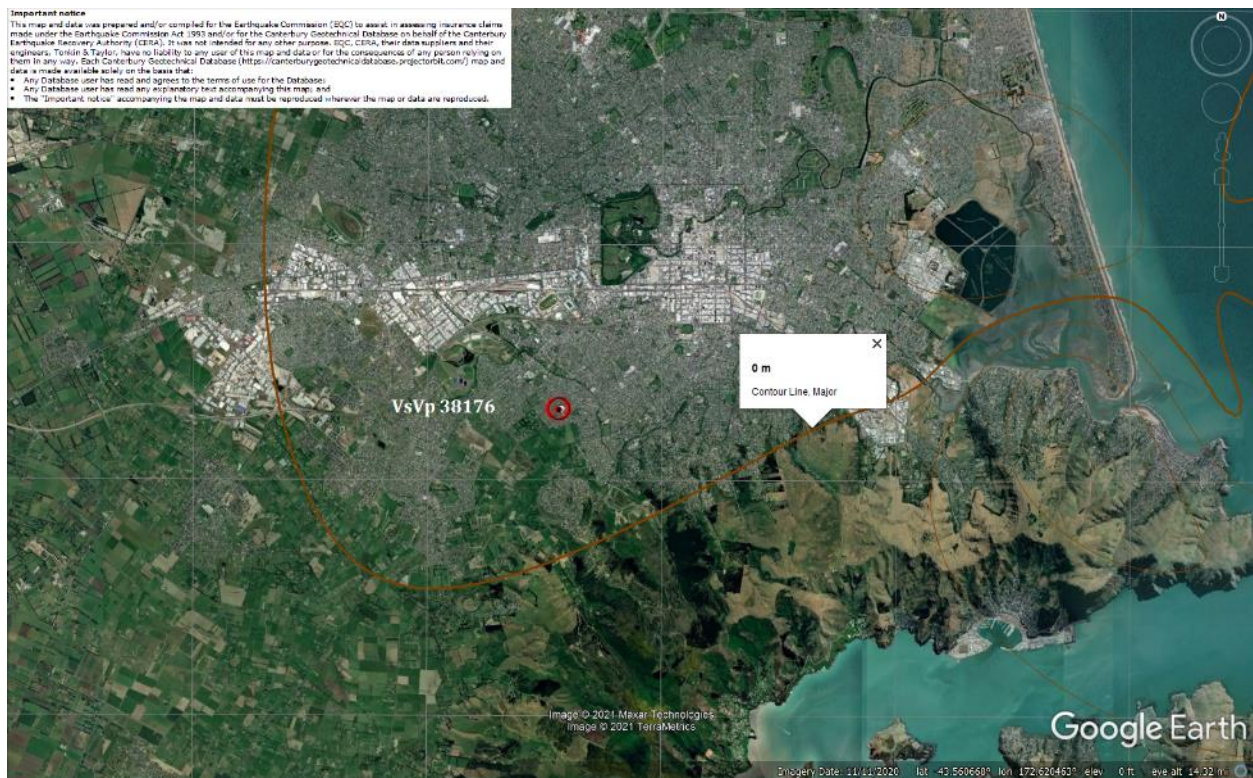


Figure 28: Vertical tectonic movements for June 2011 Earthquake.

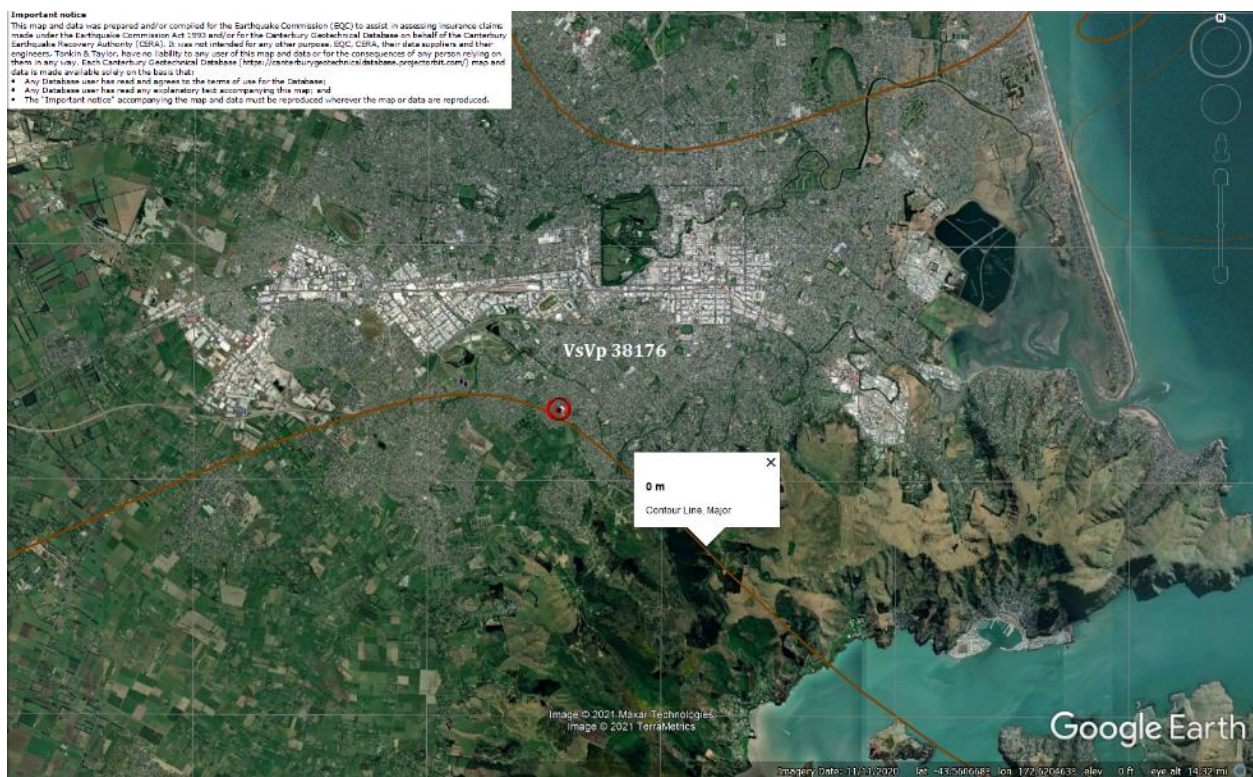


Figure 29: Vertical tectonic movements for Dec 2011 Earthquake.

Liquefaction Ejecta Case Histories for 2010-11 Canterbury Earthquakes

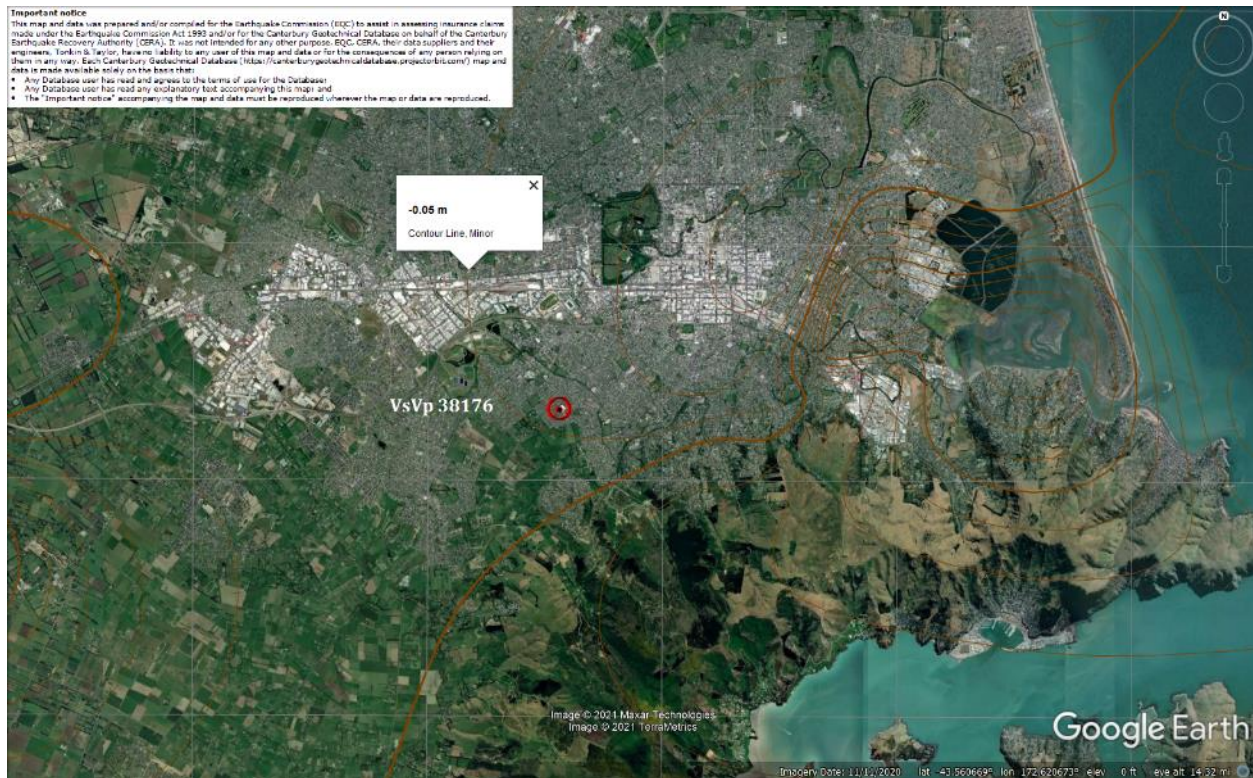


Figure 30: Vertical tectonic movements for Canterbury Earthquake Sequence.

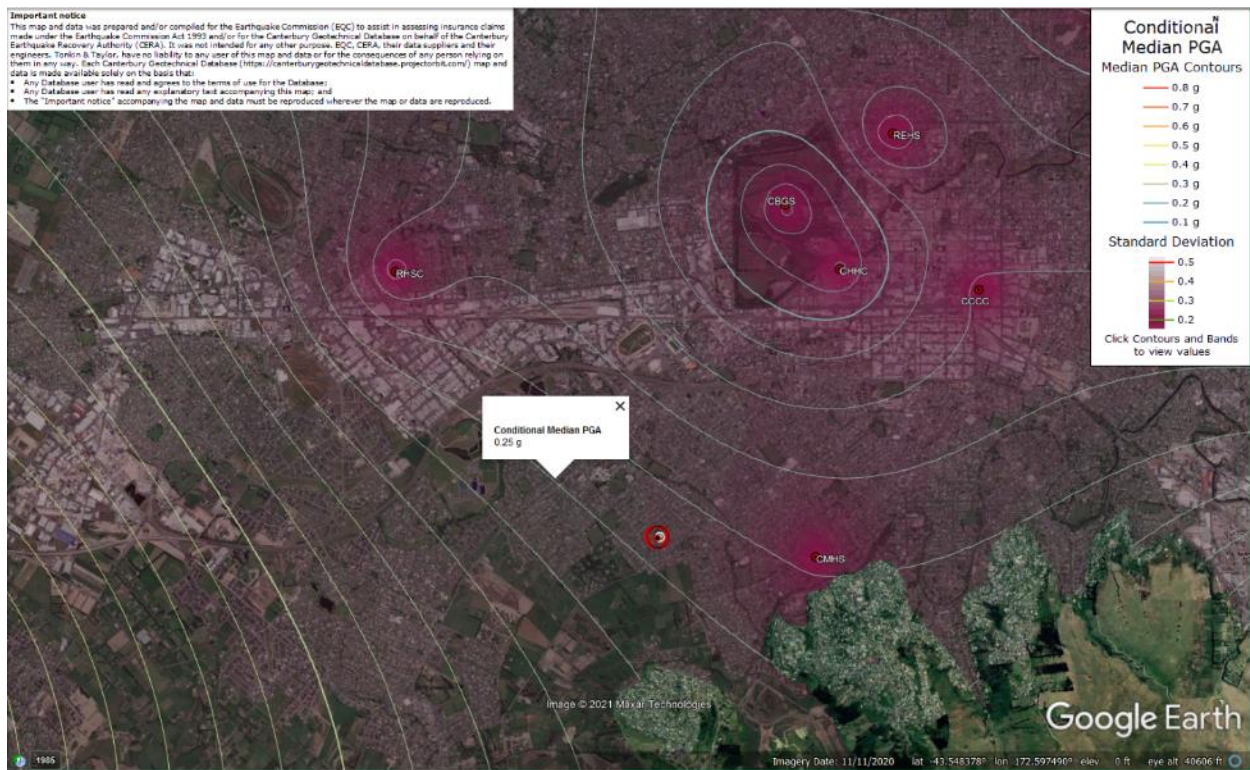


Figure 31: PGA for Sep-10 EQ (st. dev. = 0.325 to 0.350 ln units).

Liquefaction Ejecta Case Histories for 2010-11 Canterbury Earthquakes

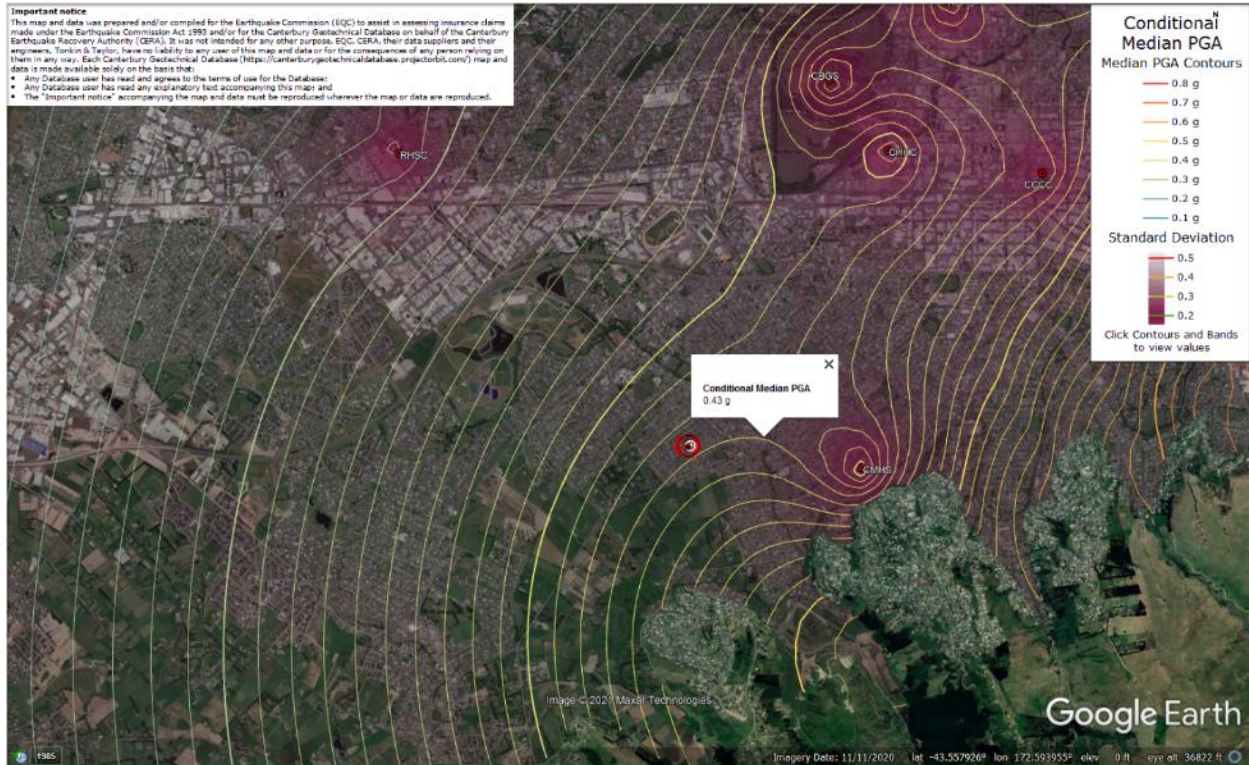


Figure 32: PGA for Feb-11 EQ (st. dev. = 0.375 to 0.400 ln units).



Figure 33: PGA for Jun-11 EQ (st. dev. = 0.400 to 0.425 ln units).

Liquefaction Ejecta Case Histories for 2010-11 Canterbury Earthquakes



Figure 34: PGA for Dec-11 EQ (st. dev. = 0.325 to 0.350 ln units).

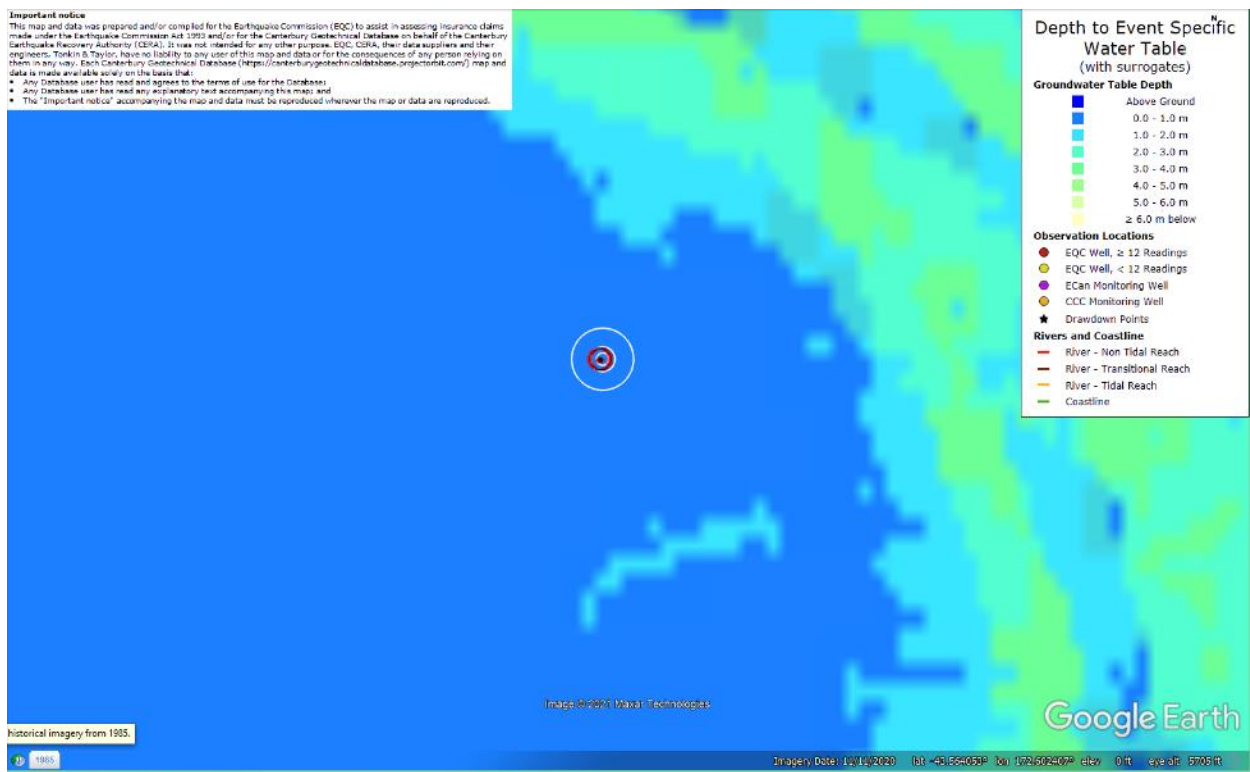


Figure 35: Depth to groundwater table for Sep-10 EQ.

Liquefaction Ejecta Case Histories for 2010-11 Canterbury Earthquakes

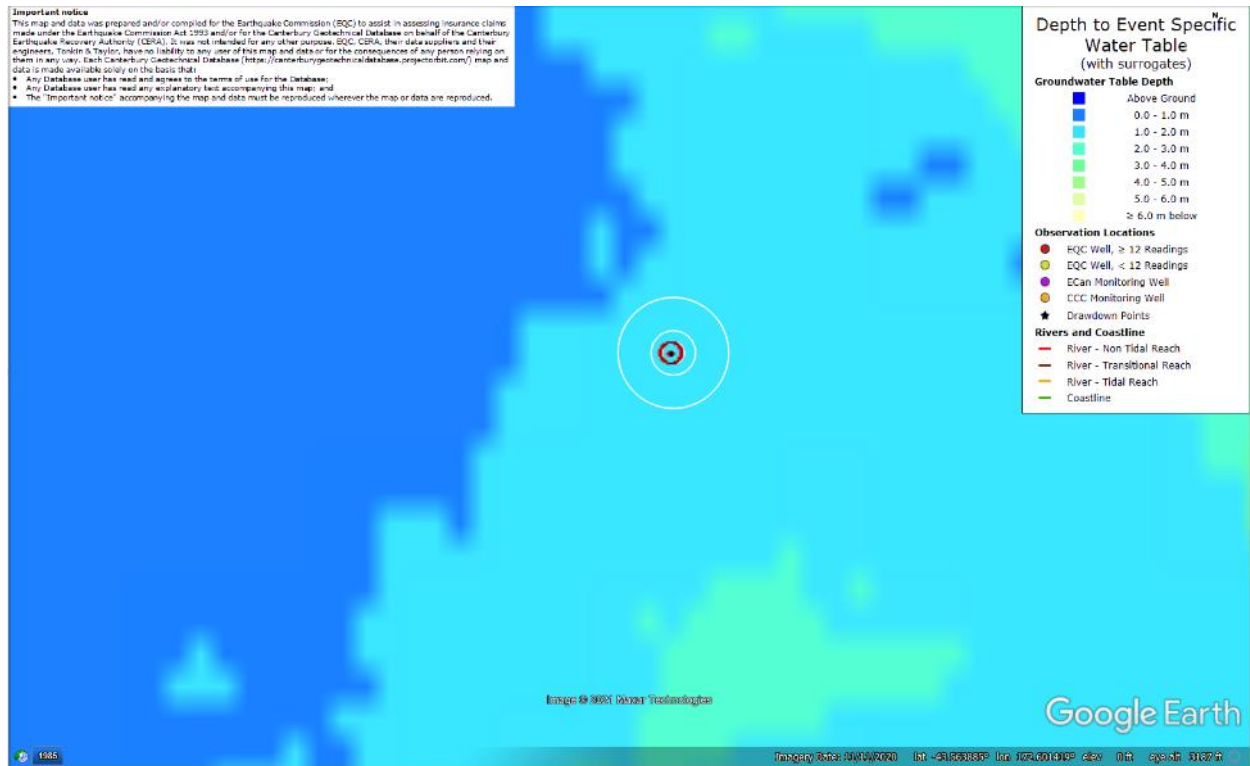


Figure 36: Depth to groundwater table for Feb-11 EQ.

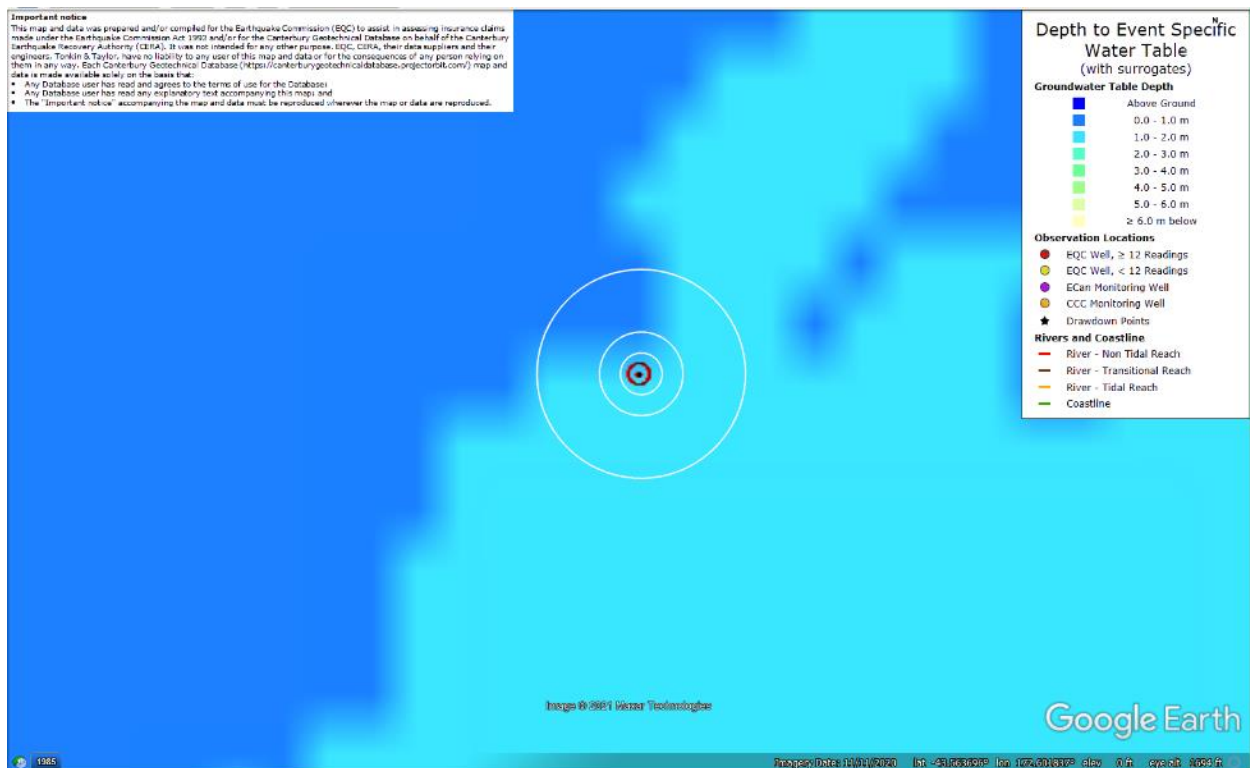


Figure 37: Depth to groundwater table for Jun-11 EQ.

Liquefaction Ejecta Case Histories for 2010-11 Canterbury Earthquakes

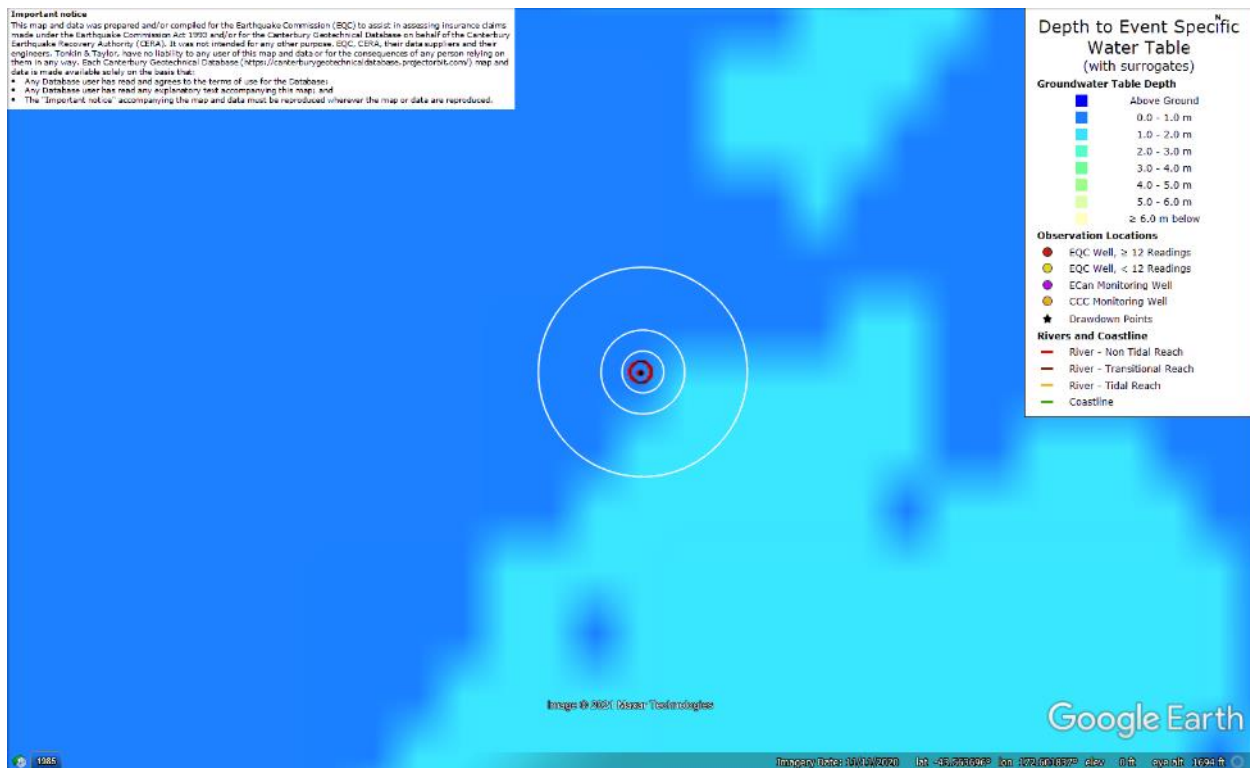


Figure 38: Depth to groundwater table for Dec-11 EQ.

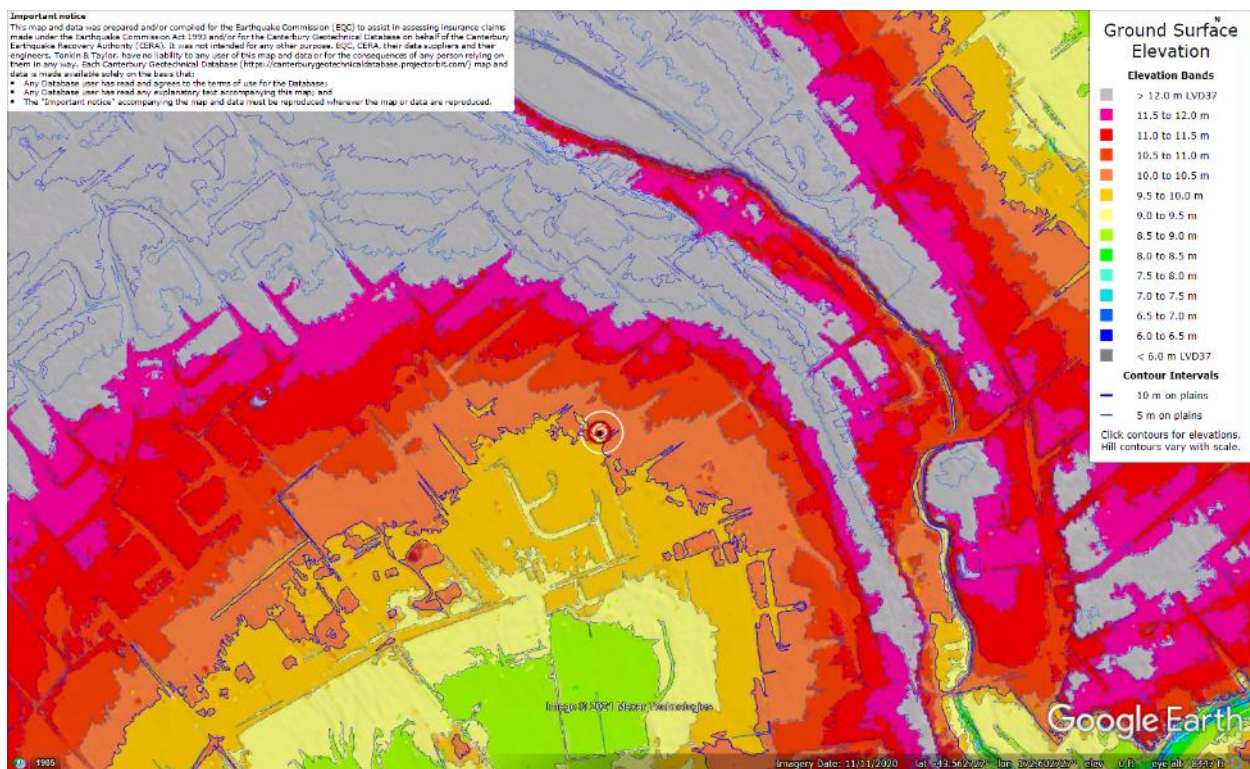


Figure 39: Ground surface elevation according to the Sep-11 LiDAR survey.

Liquefaction Ejecta Case Histories for 2010-11 Canterbury Earthquakes

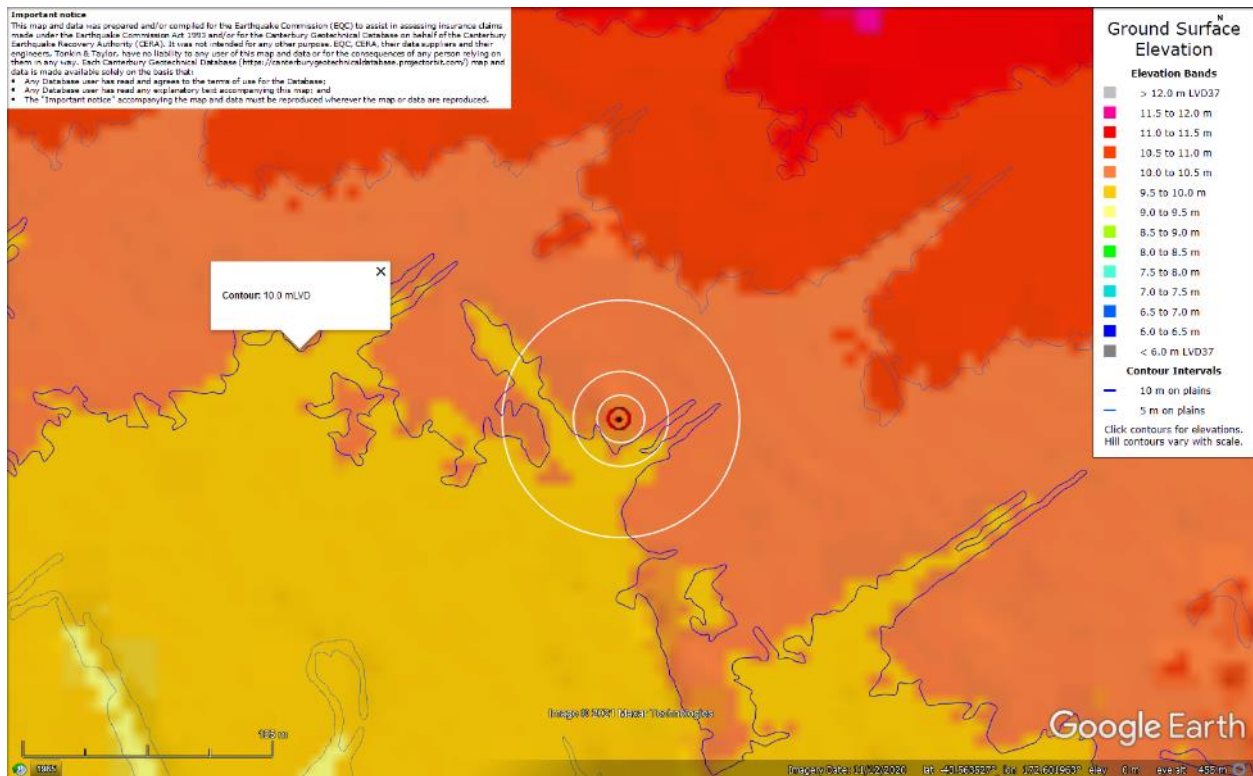


Figure 40: Ground surface elevation according to the Sep-11 LiDAR survey (enlarged).

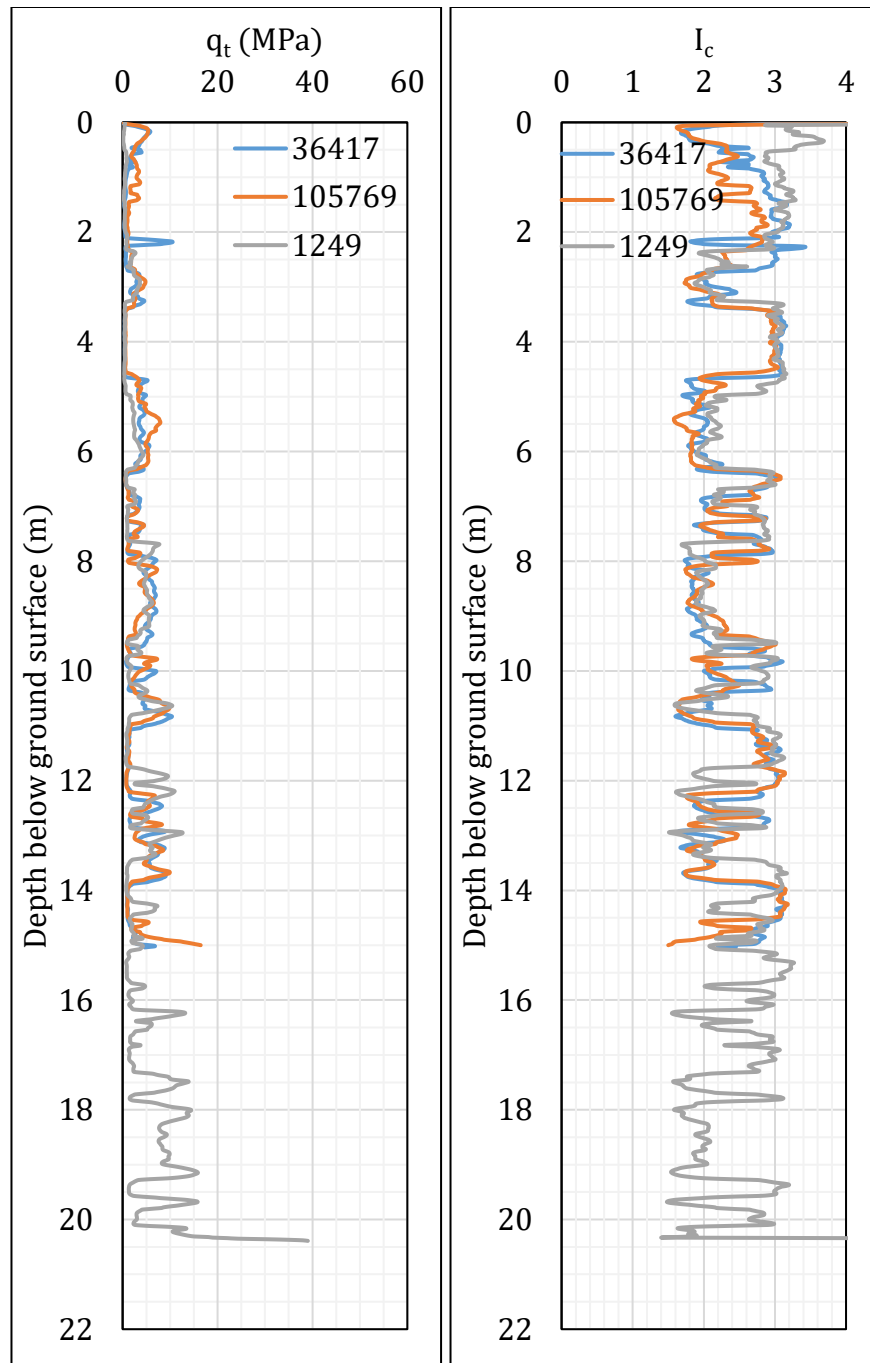


Figure 41: q_t and I_c profiles.

Note 4: The selection of CPTs for the area considered for settlement assessment (Figure 1) is based on the proximity of the CPTs to the considered areas. In accordance with that, the following table shows CPTs that were used for the volumetric settlement analysis in *Cliq v.3.0.3.2*, a CPT soil liquefaction software developed by GeoLogismiki. (The average volumetric settlements were reported in Table 8.)

Table 5: CPT profiles used in volumetric settlement analysis for areas selected for settlement assessment.

CPT ID No.	10-m buffer	20-m buffer	50-m buffer
36417 (38493)	✓	✓	✓
105769 (110064)	✓	✓	✓
1249			✓

Note: CPT 1249 was used to compute the volumetric settlement for a depth range from 15 m to 20 m.

Table 6: CPT-based results.

EQ Event	Parameter	CPT ID			
		36417	105769	1249	$\Delta_{15m-20m}$
Sep-10	S _{V1D} (mm)	170	206	202	43
	LSN	27	38	27	3
	LPI	18	21	18	1
	LPI _{ish}	12	14	13	--
	D _{FS<1} (m)	2.71	2.34	2.33	--
Feb-11	S _{V1D} (mm)	169	199	212	53
	LSN	25	30	28	3
	LPI	23	26	23	1
	LPI _{ish}	14	17	14	--
	D _{FS<1} (m)	2.71	2.34	2.33	--
Jun-11	S _{V1D} (mm)	77	100	74	7
	LSN	11	13	11	1
	LPI	2	2	2	0
	LPI _{ish}	0	0	0	--
	D _{FS<1} (m)	4.7	6.89	4.96	--
Dec-11	S _{V1D} (mm)	28	37	26	1
	LSN	4	5	4	0
	LPI	0	0	0	0
	LPI _{ish}	0	0	0	--
	D _{FS<1} (m)	undet.	undet.	undet.	--

Notes: D_{FS<1} = Depth to the first liquefiable layer (FS_L<1) that is at least 200-mm thick, as determined by the Boulanger and Idriss (2016) liquefaction-triggering procedure ($P_L=50\%$, $C_{FC}=0.13$, and $I_{c,cutoff}=2.6$), and exported from *Cliq v.3.0.3.2*; undet. = the specified soil layer was not detected; The S_{V1D}, LSN, and LPI computed for CPTs 36417 and 105769 correspond to a depth range from 0 to 15 m; $\Delta_{15m-20m}$ indicates the amount of S_{V1D}, LSN, and LPI to be added to CPTs 36417 and 105769 due to their shallow penetration depths.

Note 5: Based on the borehole log (BH 38196, Figure 1), the groundwater table is at a depth of 0.4 m below the ground surface. The soil profile consists of (1) topsoil to a depth of 0.1 m, (2) silt, ML, to a depth of 4.7 m, (3) silty fine sand, SM, to a depth of 6.2 m, (4) silt, ML, to a depth of 7.75 m, (5) silty fine sand, SM, to a depth of 9.1 m, and (6) sandy silt, ML, to a depth of 10 m (the end of the borehole). These are the Yaldhurst members of the Springston formation (except the topsoil layer).